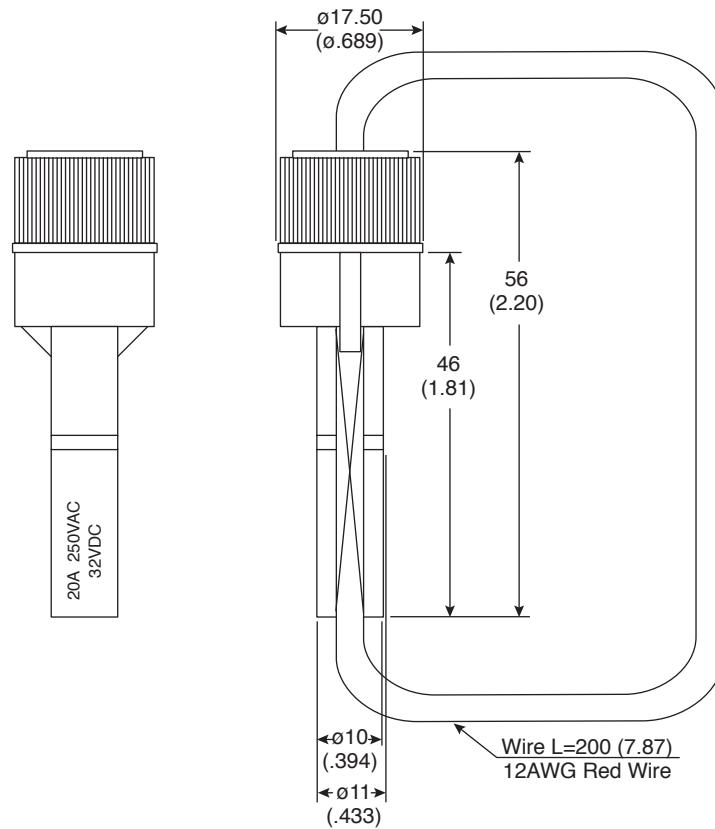
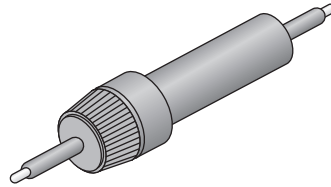


Date Last Revised: 3/10/15



DIMENSIONS: mm (in.)

ELECTRICAL SPECIFICATIONS	
Rating:	20A / 250VAC, 32VDC
Insulation Resistance:	500V DC 100M (Ω) Min.
Dielectric Strength:	1000V AC 1 minute
Fuse Size:	$\phi 6.35 \times 31.8\text{mm} / \phi 6.0 \times 30\text{mm}$
Tolerance:	+/- 0.5mm unless otherwise specified
RoHS Compliant	

Available from Mouser Electronics
1-800-346-6873 / www.mouser.com

EPD-200526